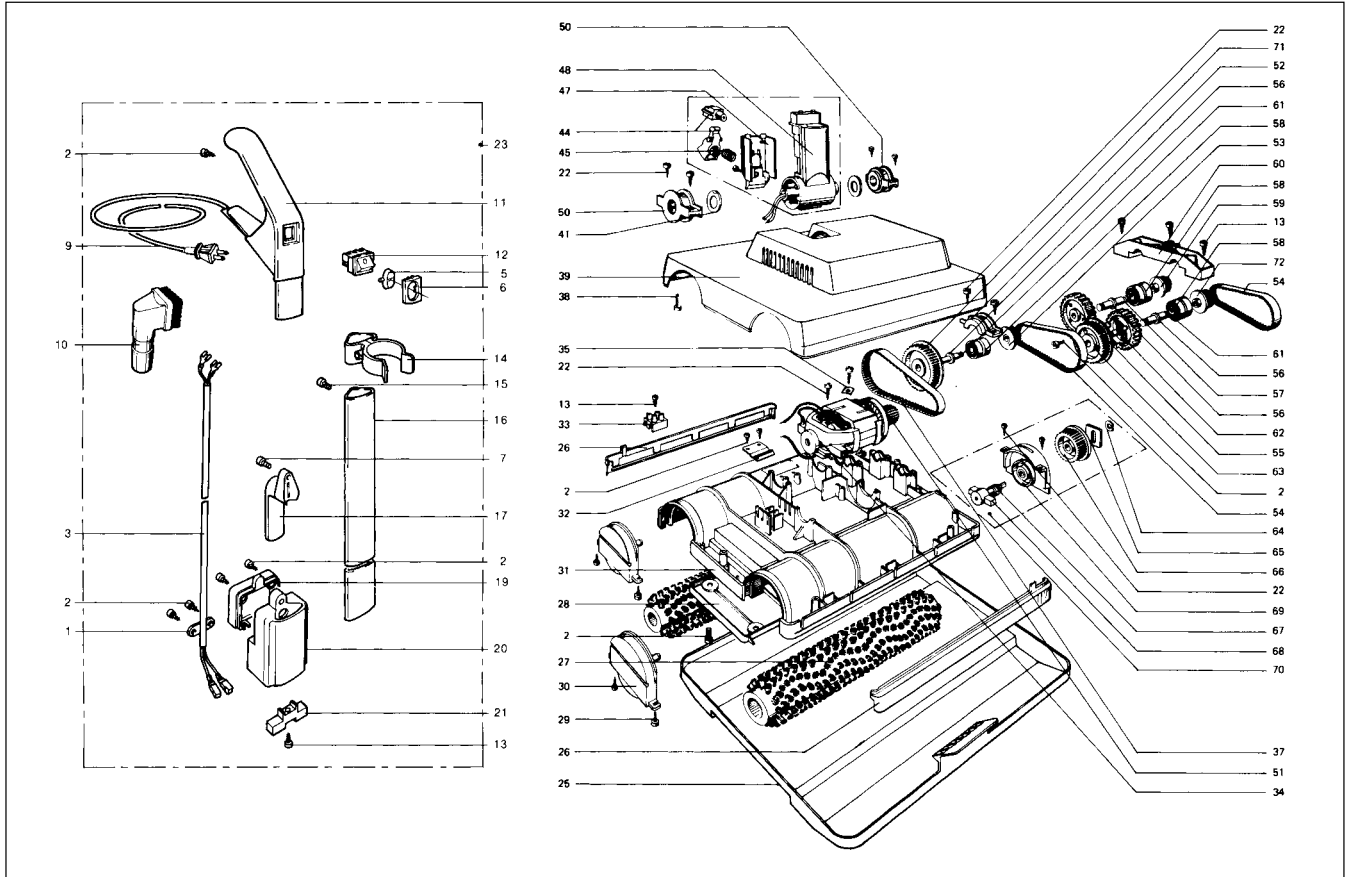




# SEBO duo Brush Machine

## Schematic and Parts List



Pos.	Part #	Description
1	1030 UL	Cable clamp
2	0106	Screw 3.9 x 13 A2
3	3125	Handle cable
5	3137 DG	Switch cap
6	3136 HG	Switch cap holder
7	0127	Screw tapitite M4 x 10
9	5353 HG	Cable
10	3055 HG	Spot cleaning brush
11	3142 HG	Handle grip
12	0532 ER	Rocker switch
13	0105	Screw 3.9 x 19
14	5352 HG	Clamp
15	0129	Screw tapitite M4 x 12
16	3115	Handle
17	3118 HG	Cable hook
19	3027 HG	Handle connector cover
20	3113 HG	Handle connector
21	1020 UL	Contact cover
22	0103	Screw 3.9 x 16
23	3122/H	Handle cpl.
25	3033	Storage tray
26	2007 MG	Bumper
27	3005 ER	Brush assembly
28	3002 SW	Base plate
29	0112	Screw M4 x 10 A2
30	3010 HG	Bearing block RH
31	3001 HG	Brush housing
32	3032	Handle stop spring
33	0502	Terminal block
34	3049 ER	Motor 120 V
	05084 S	Carbon brush set
35	0141	Locking washer

Pos.	Part #	Description
37	3038	Drive belt
38	0116	Screw M4 x 30 A2
39	3004 SE	Cover
41	0149	Spacer washer
44	2438 HG	Plunger button, complete
45	2423	Spring
47	2022 HG	Swivel neck cover
48	3111 HG	Swivel neck complete
50	3051	Swivel neck support
51	3014	Motor pulley
52	3030	Clamp
53	3013	Pulley
54	3042	Drive belt
55	3022	Gear wheel
56	3036	Spacer
57	3037	Shaft RH
58	0222	Ball bearing
59	3015	Pulley
60	3039	Bridge
61	3035	Shaft LH
62	3021	Gear wheel
63	3018	Pulley
64	3071	Clip
65	3040	End plate
66	3009	Pulley
67	3028	Spring
68	3007	Brush drive cog
69	3074 HG	Bearing block
70	3052 HG	Bearing block assembly LH
71	3017	Pulley
72	3056	Pulley 12R/Ms